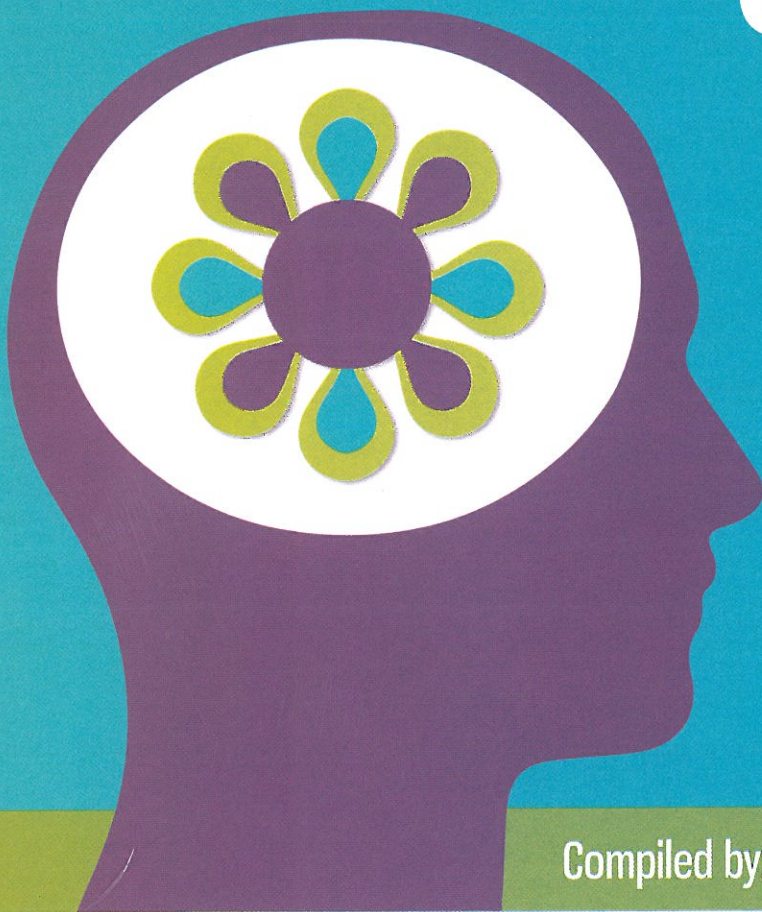


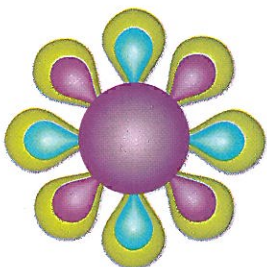
Catalog of Programs



1-800-567-HOPE (4673)
text 741741

Compiled by: Kelly Monroe, MSSA, LISW-S, Clinical Director

BROUGHT TO YOU BY



Mental Health &
Recovery Services
Board of
Allen, Auglaize, and
Hardin Counties



AGENCIES

Access Units (walk-in screening) and Hopeline SBIRT

ALLEN, AUGLAIZE, & HARDIN

Evidence based screening process used to identify, reduce, and prevent emotional and substance abuse issues

HOPELINE - 1-800-567-HOPE (4673)

ALLEN, AUGLAIZE, & HARDIN

Emergency crisis care via the telephone, information/referral, crisis follow-up

CRISIS TEXT LINE - text 741741

ALLEN, AUGLAIZE, & HARDIN

Emergency crisis care via text line

Alcohol and Other Drug (AOD) Assessment

ALLEN, AUGLAIZE, & HARDIN

Comprehensive assessment that guides treatment recommendations and diagnosis

Alcohol and Other Drug (AOD) Case Management

ALLEN, AUGLAIZE, & HARDIN

Case management, skill building, and linkage to services

Alcohol and Other Drug (AOD) Counseling

ALLEN, AUGLAIZE, & HARDIN

Counseling intervention aimed at teaching behavior change to recover from addiction

Alcohol and Other Drug (AOD) Groups

AFTERCARE

ALLEN, AUGLAIZE, & HARDIN

Alcohol & drug support for those with substance abuse issues following treatment

ALCOHOL AND OTHER DRUG AWARENESS

ALLEN, AUGLAIZE, & HARDIN

Alcohol & drug education

MORAL RECONATION THERAPY

ALLEN, AUGLAIZE, & HARDIN

Cognitive behavioral program for substance abuse & criminal justice offenders designed to connect individuals to needed services

RELAPSE PREVENTION

ALLEN, AUGLAIZE, & HARDIN

Teaches skills needed to prevent relapse and maintain recovery

STAGES OF CHANGE (1 & 2)

ALLEN, AUGLAIZE, & HARDIN

Five stage model for those with substance abuse issues designed to motivate change according to their current desire to change

STEPS

ALLEN - SERVES ALL 3 COUNTIES

Ten hour substance abuse weekend treatment program

THINKING FOR A CHANGE

ALLEN & HARDIN

Cognitive behavioral program that concentrates on changing the criminogenic thinking of offenders

WIIT (WE'RE IN IT TOGETHER)

ALLEN

Early engagement & education group for those with substance use issues

Alcohol and Other Drug (AOD) Intensive Outpatient

ALLEN, AUGLAIZE, & HARDIN

Counseling/treatment services offered at 8-9 hours per week includes both group and individual modalities

Care Navigation

ALLEN, AUGLAIZE, & HARDIN

Navigation from inpatient units & emergency department at SRMC directly to needed outpatient services

Changing Seasons

ALLEN

Peer support for those with severe mental illness offered at a drop-in center

Cognitive Enhancement Therapy

ALLEN (AUGLAIZE & HARDIN COMING SOON)

Enhances mental capacities that produce the awareness for self-directed social interactions for those with serious mental illness

Community Psychiatric Supportive Treatment (CPST)

ALLEN, AUGLAIZE, & HARDIN

Case management, skill building, and linkage to services

Crisis Intervention/Prescreening

ALLEN, AUGLAIZE, & HARDIN

Emergency crisis care aimed at restoring equilibrium provided by health officers who are appointed by the Board

Crisis Stabilization Unit

ALLEN, AUGLAIZE, & HARDIN

Emergency psychological care in a 15- bed crisis stabilization unit

Criminal Justice

ALLEN AND HARDIN

Re-entry work aimed at reintegrating those who are incarcerated back to the community and drug court coordination to connect individuals to needed services

Employment Navigation

ALLEN, AUGLAIZE, & HARDIN

Navigation, job placement, and ongoing job support collaborating with DJFS

FACT

(Fathers Accountable for Children's Tomorrows)

ALLEN & HARDIN

Collaborative five agency program for fathers who are in arrears with paying child support that teaches family bonding, job training and job readiness

FIRST Episode Psychosis

ALLEN, AUGLAIZE, & HARDIN

Early identification and treatment program for those with first episode of psychosis due to Schizophrenia

Housing

ASSISTED LIVING

OUT OF COUNTY BOARD AREA

Assisted living environment for those with combined medical and mental illness who require medical monitoring

ADULT CARE FACILITIES

OUT OF COUNTY BOARD AREA

Group home environments for those who require 24/7 monitoring and support due to a severe mental illness

HOUSING ASSISTANCE PROGRAM (HAP)

ALLEN, AUGLAIZE, & HARDIN

Temporary rent assistance/subsidy for those with severe mental illness

PERMANENT SUPPORTIVE HOUSING

ALLEN

Housing and service support for those with low income and serious persistent issues including mental illness and substance abuse

RENTAL UNITS

ALLEN

Community apartments owned by Coleman and rented to those with disabilities

SHELTER PLUS CARE

ALLEN, AUGLAIZE, & HARDIN

Partnership with Allen MET Housing to provide permanent housing and supportive services to homeless people with severe mental illness

Medication Assisted Treatment

ALLEN, AUGLAIZE, & HARDIN

Pharmacological intervention to assist in treating substance dependence

Mental Health Assessment

ALLEN, AUGLAIZE, & HARDIN

Comprehensive assessment that guides treatment recommendations and diagnosis

Mental Health Counseling

ALLEN, AUGLAIZE, & HARDIN

Talk therapy implemented with various forms of interventions for emotional wellness

Mental Health Groups

ANGER MANAGEMENT

ALLEN, AUGLAIZE, & HARDIN

Group designed to teach how to manage anger in a positive way

BATTERERS INTERVENTION

ALLEN & AUGLAIZE

Program for those with domestic violence issues/charges

BORDERLINE

ALLEN

Therapy group for those with Borderline Personality Disorder

CONNECTIONS

ALLEN

Cognitive behavioral therapy group that addresses mental health symptoms and works to increase mental and physical wellness

MINDFULNESS

ALLEN

Gain awareness of the connections between body, mind, and spirit using interventions such as meditation, physical health, nutrition, and journaling

POST HOSPITAL DISCHARGE

ALLEN

Engagement group for clients in between hospital stay and 1st appointment

SELF ESTEEM

ALLEN

Group for women to work on increasing positive self-worth

SEXUAL OFFENDERS

ALLEN - SERVES ALL 3 COUNTIES

Therapy group for those with a sexual offense designed to reduce recidivism

TRAUMA RECOVERY & EMPOWERMENT MODEL

ALLEN, AUGLAIZE, & HARDIN

Trauma recovery & empowerment model used to facilitate trauma recovery

WOMEN'S SUPPORT

ALLEN (OPEN TO ANYONE, DO NOT HAVE TO BE A COLEMAN CLIENT)

Support group for women struggling with depression and anxiety

Open Gate

ALLEN, AUGLAIZE, & HARDIN

One-stop collaboration for community members to connect with multiple agencies for first steps to obtaining needed services

Primary Care

ALLEN, AUGLAIZE, & HARDIN

Medical care for physical problems experienced by clients seeking help for mental illness / substance abuse

Psychiatry

ALLEN, AUGLAIZE, & HARDIN

Medication management for mental health and substance use disorders

Re-Entry Coordinator

ALLEN

Re-entry work aimed at reintegrating those who are incarcerated back to the community

Recovery Coaching

ALLEN, AUGLAIZE, & HARDIN

Peer based support designed to assist those with addiction to gain the resources and support needed for their recovery

Alcohol & Other Drug (AOD) Assessment

ALLEN, AUGLAIZE, & HARDIN

Comprehensive assessment that guides treatment recommendations and diagnosis

Alcohol and Other Drug (AOD) Case Management

ALLEN, AUGLAIZE, & HARDIN

Case management, skill building, and linkage to services

Alcohol & Other Drug (AOD) Counseling

ALLEN, AUGLAIZE, & HARDIN

Counseling intervention aimed at teaching behavior change to recover from addiction

Alcohol & Other Drug Groups

MORAL RECONATION THERAPY

ALLEN & AUGLAIZE

Cognitive behavioral program for substance abuse & criminal justice offenders designed to increase moral reasoning

Alcohol and Other Drug (AOD) Intensive Outpatient

ALLEN - SERVES ALL 3 COUNTIES

Structured intensive level of care for those with substance abuse and dependence disorders

Community Psychiatric Supportive Treatment (CPST)

ALLEN, AUGLAIZE, & HARDIN

Case management, skill building, and linkage to services

Crisis Intervention

ALLEN, AUGLAIZE, & HARDIN

Emergency crisis care aimed at restoring equilibrium

Juvenile Court Navigation

ALLEN

Liaison working with the courts who assists with programming for youth involved in the court system and JDC who have mental health and substance abuse needs

Mental Health Assessment

ALLEN, AUGLAIZE, & HARDIN

Comprehensive assessment that guides treatment recommendations and diagnosis

Mental Health Counseling

ALLEN, AUGLAIZE, & HARDIN

Talk therapy implemented with various forms of interventions for emotional wellness

Mental Health Group

AGGRESSION REPLACEMENT TRAINING

ALLEN - SERVES ALL 3 COUNTIES

Evidence based intervention to alter the behavior of chronically aggressive youth

PROBLEMATIC SEXUAL BEHAVIOR TREATMENT

ALLEN - SERVES ALL 3 COUNTIES

Adolescent sex offender treatment

Prevention Programming

ALLEN, AUGLAIZE, & HARDIN

PAX Good Behavior Game coaching, Teen Screen

Psychiatry

ALLEN, AUGLAIZE, & HARDIN

Medication management for mental health disorders

School Navigation

ALLEN, AUGLAIZE, & HARDIN

School based programming, referral to services, and consultation

Alcohol and Other Drug (AOD) Case Management

ALLEN, AUGLAIZE, & HARDIN

Case management, skill building, and linkage to services

Alcohol and Other Drug (AOD) Counseling

ALLEN

Counseling intervention aimed at teaching behavior change to recover from addiction

Alcohol and Other Drug (AOD) Groups

ALLEN

Alcohol & drug group counseling for those with substance abuse issues

Alcohol and Other Drug (AOD) Intensive Outpatient

ALLEN

Counseling/treatment services offered at 8-9 hours per week includes both group and individual modalities

Anger Management

ALLEN

Program designed to reduce both emotional feelings and physiological arousal associated with anger

Batterers Intervention

ALLEN

Perpetrators of domestic violence are taught to take responsibility for their actions, beliefs, and attitudes that contribute to violence and to develop non-violent alternatives in dealing with conflict

Circle for Re-entry Ohio (CFRO)

ALLEN & HARDIN

Program for those transitioning from prison to the community

Education Programming DRIVER'S INTERVENTION PROGRAM

ALLEN, AUGLAIZE, & HARDIN

Available for any county - self pay 72 hour certified alcohol education program

GEMS

ALLEN

Girls empowerment program

MALE ACADEMY (MATCH)

ALLEN

Social skills and self-esteem programming for boys

SUMMER ENRICHMENT (STEM)

ALLEN

Education/recreation & leadership program

Medication Assisted Treatment

ALLEN

Pharmacological intervention to assist in treating substance dependence

Prevention Programming AIMING HIGH

ALLEN

After school alcohol and other drug and violence prevention program

PEACEMAKER PROJECT

ALLEN

School based violence prevention program

START TALKING

ALLEN

School based alcohol and other drug prevention curriculum

Recovery Coaching

ALLEN & HARDIN

Peer based support designed to assist those with addiction to gain the resources and support needed for their recovery

Recovery Housing MEN'S RECOVERY HOUSES

ALLEN & HARDIN

Transitional recovery housing for men

WOMEN'S HOUSES

ALLEN & HARDIN

Women's transitional recovery housing

SCATTERED SITE HOUSING

ALLEN & HARDIN

Recovery based community apartments

WOMEN & CHILDREN RECOVERY HOUSE

ALLEN

Transitional recovery housing for women with children

Coalition Building

ENGAGING COMMUNITIES COALITIONS

ALLEN, AUGLAIZE, & HARDIN

Reduce the Use, We Care at Work, PAX at home

SUICIDE COALITIONS

ALLEN, AUGLAIZE, & HARDIN

Suicide prevention, education and awareness

Postvention Outreach

LOSS TEAM

ALLEN, AUGLAIZE, & HARDIN

Active Postvention Model that complements services provided at the scene of a suicide to support survivors and offer resources

Prevention Outreach

ALLEN, AUGLAIZE, & HARDIN

Information dissemination to local physicians, churches, and agencies to outreach and inform community of local MH/AOD services

Prevention Programming

OLWEUS

ALLEN, AUGLAIZE, & HARDIN

Bullying prevention programming for schools

REMOVE, REFUSE, REASONS

ALLEN, AUGLAIZE, & HARDIN

Drug and alcohol prevention program for schools

ACT RAISING SAFE KIDS

ALLEN, AUGLAIZE, & HARDIN

Violence prevention programming for parents

SAFE DATES

ALLEN, AUGLAIZE, & HARDIN

Dating violence prevention

MENTAL HEALTH FIRST AID

ALLEN, AUGLAIZE, & HARDIN

Program that teaches how to identify, understand, and respond to signs of mental illness and substance use

LIFELINES

ALLEN, AUGLAIZE, & HARDIN

Suicide prevention program for schools

STACKED DECK

ALLEN, AUGLAIZE, & HARDIN

Gambling prevention program for teens
7th-12th grades

PAX AT HOME

ALLEN, AUGLAIZE, & HARDIN

Program that teaches how to implement essential components of the PAX Good Behavior Game at home

Support Groups

ALLEN, AUGLAIZE, & HARDIN

Seven support groups offered for those who need support surrounding specific topics/life events

Youth Led Prevention Coalitions

ALLEN, AUGLAIZE, & HARDIN

Youth formed coalitions engages peers, families, and local leaders to promote healthy behaviors, create healthy alternatives, and prevent alcohol & drug abuse, violence, and bullying under the guidance of adult certified prevention specialists

PVFF SUPPORT GROUPS

www.pvff.org

SHELTER FROM THE STORM

Bipolar & Depression

DELPHOS

Mondays 6:30 - 7:30 pm.
First Edition Building
Delphos Public Library
309 W 2nd Street
Delphos, Ohio 45833

LIMA

Wednesdays 6:00pm - 7:00pm
Union Square
Corner of Elm St & Central Ave
Lima, Ohio 45801

WAPAKONETA

Mondays 6:00pm - 7:00pm
First English Lutheran Church
107 W Mechanic Street
Wapakoneta, Ohio 45895

KENTON

Wednesdays 6:00pm - 7:00pm
We Care Center
775 E Eliza Street
Kenton, Ohio 43326

PFLAG

Parents & Friends of
Lesbians & Gays

1st Tuesday of each month
6:00pm - 8:00pm
PVFF
309 W High Street, Suite A
Lima, Ohio 45801

MOZAIC

LGBT Youth & Allies

1st, 2nd & 4th Tuesdays
6:00pm - 8:00pm
PVFF
309 W High Street, Suite A
Lima, Ohio 45801

SAFE SPACES

LGBTQ & Allies

2nd & 4th Tuesdays
6:00pm - 8:00pm
PVFF
309 W High Street, Suite A
Lima, Ohio 45801

GRASSP

Grief, Resiliency, and Surviving Suicide's Pain

WAPAKONETA

1st Tuesday of each month
6:30pm - 8:00 pm
St. Paul United Church of Christ
101 Perry Street
Wapakoneta, Ohio 45895

KENTON

2nd Monday of each month
5:30pm - 7:00pm
We Care Center
775 E Eliza Street
Kenton, Ohio 43326

LIMA

2nd Tuesday of each month
6:30pm - 8:00pm
PVFF
309 W High Street Suite A
Lima, Ohio 45801

KEEPING WHAT MATTERS

Gambling

Mondays 6:00pm - 7:00pm
PVFF
309 W High Street, Suite A
Lima, Ohio 45801

UNDERSTANDING LOSS

Grief & Loss

Mondays 6:00pm - 7:00pm
PVFF
309 W High Street, Suite A
Lima, Ohio 45801

All support groups are free and open to the public

Alcohol and Other Drug (AOD) Assessment

ALLEN - SERVES ALL 3 COUNTIES

Comprehensive assessment that guides treatment recommendations and diagnosis

Alcohol and Other Drug (AOD) Case Management

ALLEN, AUGLAIZE, & HARDIN

Case management, skill building, and linkage to services

Alcohol and Other Drug (AOD) Counseling

ALLEN - SERVES ALL 3 COUNTIES

Counseling intervention aimed at teaching behavior change to recover from addiction

Community Psychiatric Supportive Treatment (CPST)

ALLEN, AUGLAIZE, & HARDIN

Case management, skill building, and linkage to services

Mental Health Assessment

ALLEN - SERVES ALL 3 COUNTIES

Comprehensive assessment that guides treatment recommendations and diagnosis

Mental Health Counseling

ALLEN - SERVES ALL 3 COUNTIES

Talk therapy implemented with various forms of interventions for emotional wellness

Mental Health Group

ALLEN - SERVES ALL 3 COUNTIES

Talk therapy implemented with various forms of group interventions for emotional wellness

Prevention Programming

ALLEN

PAX Good Behavior Game coaching

Psychiatry

ALLEN - SERVES ALL 3 COUNTIES

Medication management for mental health disorders

School Navigation

ALLEN

School based programming, referral to services, and consultation

Support Groups

ALLEN - SERVES ALL 3 COUNTIES

Support groups offered for those who need support surrounding specific topics/life events

SPECIAL SERVICES & PROGRAMS

Cardon Outreach

ALLEN, AUGLAIZE, & HARDIN

Contract to assist eligible adults with applying for Medicaid and Disability benefits

Critical Incident Stress Management

ALLEN, AUGLAIZE, & HARDIN

Process that helps people be resistant, resilient, and recover from critical incident stress that includes schools, businesses, community disasters, and other tragic events

Medical Detoxification

MAUMEE but available to Allen, Auglaize, & Hardin

Process of monitoring and administering medical treatment to a person experiencing withdrawal symptoms

We Care at Work

ALLEN, AUGLAIZE, & HARDIN

Collaboration with Working Partners and Coleman Behavioral Health to provide drug free workplace policy and education and/or treatment for those who test positive for alcohol and other drugs to offer second chances to employees

PROGRAMS

Access Units

Evidence based screening process use to identify, reduce, and prevent emotional and substance abuse issues

COLEMAN BEHAVIORAL HEALTH

799 South Main Street
Lima, OH 45804
419-229-2222
colemanservices.org

775 East Eliza Street
Kenton, OH 43326
419-675-2243

720 Armstrong Street
St. Marys, OH 45885
419-300-7630

Alcohol and Other Drug (AOD) Case Management

Case management, skill building, and linkage to services

COLEMAN BEHAVIORAL HEALTH

799 South Main Street
Lima, OH 45804
419-229-2222
colemanservices.org

775 East Eliza Street
Kenton, OH 43326
419-675-2243

720 Armstrong Street
St. Marys, OH 45885
419-300-7630

16 East Auglaize Street
Wapakoneta, OH 45895

FAMILY RESOURCE CENTER

530 South Main Street
Lima, OH 45804
419-222-1168
Toll Free: 1-800-472-5279
frcohio.com

720 Armstrong Street
St. Marys, OH 45885
419-394-7451

775 East Eliza Street
Kenton, OH 43326
419-679-1219

SAFY

658 West Market Street, Suite 101
Lima, OH 45801
419-222-1527
Toll Free: 877-822-0556
safy.org

UMADAOP

311 East Market Street, 3rd Floor
Lima, OH 45801
419-222-4474
limaumadaop.com

416 South Main Street
Kenton, Ohio 43326
419-679-1679

Alcohol and Other Drug (AOD) Counseling

Counseling intervention aimed at teaching behavior change to recover from addiction

COLEMAN BEHAVIORAL HEALTH

799 South Main Street
Lima, OH 45804
419-229-2222
colemanservices.org

775 East Eliza Street
Kenton, OH 43326
419-675-2243

720 Armstrong Street
St. Marys, OH 45885
419-300-7630

16 East Auglaize Street
Wapakoneta, OH 45895

FAMILY RESOURCE CENTER

530 South Main Street
Lima, OH 45804
419-222-1168
Toll Free: 1-800-472-5279
frcohio.com

720 Armstrong Street
St. Marys, OH 45885
419-394-7451

775 East Eliza Street
Kenton, OH 43326
419-679-1219

SAFY

658 West Market Street, Suite 101
Lima, OH 45801
419-222-1527
Toll Free: 877-822-0556
safy.org

UMADAOP

311 East Market Street, 3rd Floor
Lima, OH 45801
419-222-4474
limaumadaop.com

416 South Main Street
Kenton, Ohio 43326
419-679-1679

Alcohol and Other Drug (AOD) Groups

Alcohol & drug group counseling for those with substance abuse issues following treatment

COLEMAN BEHAVIORAL HEALTH

799 South Main Street
Lima, OH 45804
419-229-2222
colemanservices.org

775 East Eliza Street
Kenton, OH 43326
419-675-2243

720 Armstrong Street
St. Marys, OH 45885
419-300-7630

16 East Auglaize Street
Wapakoneta, OH 45895

FAMILY RESOURCE CENTER

530 South Main Street
Lima, OH 45804
419-222-1168
Toll Free: 1-800-472-5279
frcohio.com

UMADAOP

311 East Market Street, 3rd Floor
Lima, OH 45801
419-222-4474
limaumadaop.com

Alcohol and Other Drug (AOD) Intensive Outpatient

Counseling/treatment services offered at 8-9
hours per week includes both group and
individual modalities

COLEMAN BEHAVIORAL HEALTH

799 South Main Street
Lima, OH 45804
419-229-2222
colemanservices.org

775 East Eliza Street
Kenton, OH 43326
419-675-2243

720 Armstrong Street
St. Marys, OH 45885
419-300-7630

FAMILY RESOURCE CENTER

530 South Main Street
Lima, OH 45804
419-222-1168
Toll Free: 1-800-472-5279
frcohio.com

UMADAOP

311 East Market Street, 3rd Floor
Lima, OH 45801
419-222-4474
limaumadaop.com

Cardon Outreach

Medicaid and disability application assistance

COLEMAN BEHAVIORAL HEALTH

799 South Main Street
Lima, OH 45804
419-229-2222
colemanservices.org

75 East Eliza Street
Kenton, OH 43326
419-675-2243

720 Armstrong Street
St. Marys, OH 45885
419-300-7630

Care Navigation

Creating a Bridge from Inpatient to Outpatient
Treatment

COLEMAN BEHAVIORAL HEALTH

799 South Main Street
Lima, OH 45804
419-229-2222
Fax: 419-229-0202
colemanservices.org

Changing Seasons

Peer support for those with severe mental illness
offered at a drop-in center

COLEMAN BEHAVIORAL HEALTH

Y Annex
1365 South West Street
Lima, OH 45801
419-221-1988

16 East Auglaize Street
Wapakoneta, OH 45895

Circle for Re-Entry Ohio

Community re-integration from incarceration

UMADAOP

311 East Market Street, 3rd Floor
Lima, OH 45801
419-222-4474
limaumadaop.com

416 South Main Street
Kenton, Ohio 43326
419-679-1679

Community Psychiatric Supportive Treatment (CPST)

Case management, skill building, and
linkage to services

COLEMAN BEHAVIORAL HEALTH

799 South Main Street
Lima, OH 45804
419-229-2222
colemanservices.org

775 East Eliza Street
Kenton, OH 43326
419-675-2243

720 Armstrong Street
St. Marys, OH 45885
419-300-7630

16 East Auglaize Street
Wapakoneta, OH 45895

FAMILY RESOURCE CENTER

530 South Main Street
Lima, OH 45804
419-222-1168
Toll Free: 1-800-472-5279
frcohio.com

720 Armstrong Street
St. Marys, OH 45885
419-394-7451

775 East Eliza Street
Kenton, OH 43326
419-679-1219

SAFY

658 West Market Street, Suite 101
Lima, OH 45801
419-222-1527
Toll Free: 877-822-0556
safy.org

Coalition Building

Three counties focus on suicide & drug/alcohol
prevention

PVFF

309 West High Street, Suite A
Lima, OH 45801
419-549-8530
pvff.org

Cognitive Enhancement Therapy

Enhances mental capacities that produce the
awareness for self-directed social interactions

COLEMAN BEHAVIORAL HEALTH

799 South Main Street
Lima, OH 45804
419-229-2222
colemanservices.org

Crisis Stabilization Unit

15 bed crisis unit.

COLEMAN BEHAVIORAL HEALTH

797 South Main Street
Lima, OH 45804
567-242-6112
colemanservices.org

Crisis Textline

Emergency psychological care via textline,
informational/referral, crisis follow-up

COLEMAN BEHAVIORAL HEALTH

Text: 741741

Critical Incident CISM

A volunteer team of public safety and affiliate
professionals serving fire, EMS, law enforcement,
industry, educations and other organizations
involved in any type of critical incident

MENTAL HEALTH & RECOVERY SERVICES BOARD OF ALLEN, AUGLAIZE, AND HARDIN COUNTIES

529 South Elizabeth Street
Lima, OH 45804
419-222-5120
wecarepeople.org

Drivers Intervention Program

For DUI offenders

UMADAOP

311 East Market Street, 3rd Floor
Lima, OH 45801
419-222-4474
limaumadaop.com

Education Programs

Alcohol and drug education

UMADAOP

311 East Market Street, 3rd Floor
Lima, OH 45801
419-222-4474
limaumadaop.com

416 South Main Street
Kenton, Ohio 43326
419-679-1679

Employment Navigation

Navigation, job placement, and ongoing job
support collaborating with DJFS

COLEMAN BEHAVIORAL HEALTH

799 South Main Street
Lima, OH 45804
419-229-2222
colemanservices.org

775 East Eliza Street
Kenton, OH 43326
419-675-2243

720 Armstrong Street
St. Marys, OH 45885
419-300-7630

FACT

(Fathers Accountable for Children's Tomorrows)

Collaborative five agency program for fathers who
are in arrears with paying child support that
teaches family bonding, job training and job
readiness

COLEMAN BEHAVIORAL HEALTH

799 South Main Street
Lima, OH 45804
419-229-2222
colemanservices.org

775 East Eliza Street
Kenton, OH 43326
419-675-2243

Hopeline

Emergency psychological care via the telephone,
informational/referral, crisis follow-up

COLEMAN BEHAVIORAL HEALTH

800-567-HOPE

Housing

Adult care facilities, temporary, and permanent
housing

COLEMAN BEHAVIORAL HEALTH

799 South Main Street
Lima, OH 45804
419-229-2222
colemanservices.org

Juvenile Court Navigator

Liaison working with the courts who assists with
programming for youth involved in the court
system and JDC who have mental health and
substance abuse needs

FAMILY RESOURCE CENTER

530 South Main Street
Lima, OH 45804
419-222-1168
Toll Free: 1-800-472-5279
frcohio.com

Medical Detox

Process of monitoring and administering medical
treatment to a person experiencing withdrawal
symptoms, screened at Coleman Behavioral Health
and referral made to appropriate facility

COLEMAN BEHAVIORAL HEALTH

799 South Main Street
Lima, OH 45804
419-229-2222
colemanservices.org

775 East Eliza Street
Kenton, OH 43326
419-675-2243

720 Armstrong Street
St. Marys, OH 45885
419-300-7630

Medication Assisted Treatment

Pharmacological intervention to assist in treating
substance dependence

COLEMAN BEHAVIORAL HEALTH

799 South Main Street
Lima, OH 45804
419-229-2222
colemanservices.org

775 East Eliza Street
Kenton, OH 43326
419-675-2243

720 Armstrong Street
St. Marys, OH 45885
419-300-7630

UMADAOP

311 East Market Street, 3rd Floor
Lima, OH 45801
419-222-4474
limaumadaop.com

Mental Health Counseling

Talk therapy implemented with various forms of interventions for emotional wellness

COLEMAN BEHAVIORAL HEALTH

799 South Main Street
Lima, OH 45804
419-229-2222
colemanservices.org

775 East Eliza Street
Kenton, OH 43326
419-675-2243

720 Armstrong Street
St. Marys, OH 45885
419-300-7630

16 East Auglaize Street
Wapakoneta, OH 45895

FAMILY RESOURCE CENTER

530 South Main Street
Lima, OH 45804
419-222-1168
Toll Free: 1-800-472-5279
frcohio.com

775 East Eliza Street
Kenton, OH 43326
419-675-2243

720 Armstrong Street
St. Marys, OH 45885
419-300-7630

SAFY

658 West Market Street, Suite 101
Lima, OH 45801
419-222-1527
Toll Free: 877-822-0556
safy.org

Mental Health Groups

Talk therapy implemented with various forms of group interventions for emotional wellness

COLEMAN BEHAVIORAL HEALTH

799 South Main Street
Lima, OH 45804
419-229-2222
colemanservices.org

775 East Eliza Street
Kenton, OH 43326
419-675-2243

720 Armstrong Street
St. Marys, OH 45885
419-300-7630

16 East Auglaize Street
Wapakoneta, OH 45895

FAMILY RESOURCE CENTER

530 South Main Street
Lima, OH 45804
419-222-1168
Toll Free: 1-800-472-5279
frcohio.com

775 East Eliza Street
Kenton, OH 43326
419-675-2243

720 Armstrong Street
St. Marys, OH 45885
419-300-7630

SAFY

658 West Market Street, Suite 101
Lima, OH 45801
419-222-1527
Toll Free: 877-822-0556
safy.org

Open Gate

One-stop collaboration for community members to connect with multiple agencies for first steps to obtaining needed services

COLEMAN BEHAVIORAL HEALTH

419-229-2222
colemanservices.org

Prevention Outreach

Information dissemination to local physicians, churches, and agencies to outreach and inform community of local MH/AOD services

PVFF

309 West High Street, Suite A
Lima, OH 45801
419-549-8530
pvff.org

Prevention Programs

Suicide, bullying, gambling, alcohol and other drug, and violence prevention

FAMILY RESOURCE CENTER

530 South Main Street
Lima, OH 45804
419-222-1168
Toll Free: 1-800-472-5279
frcohio.com

720 Armstrong Street
St. Marys, OH 45885
419-394-7451

775 East Eliza Street
Kenton, OH 43326
419-679-1219

PVFF

309 West High Street, Suite A
Lima, OH 45801
419-549-8530
pvff.org

SAFY

658 West Market Street, Suite 101
Lima, OH 45801
419-222-1527
Toll Free: 877-822-0556
safy.org

UMADAOP

311 East Market Street, 3rd Floor
Lima, OH 45801
419-222-4474
limaumadaop.com

Primary Care

Medical care for physical problems experienced by clients seeking help for mental illness / substance abuse

COLEMAN BEHAVIORAL HEALTH

799 South Main Street
Lima, OH 45804
419-229-2222
colemanservices.org

Psychiatry

Medication management for mental health and substance use disorders

COLEMAN BEHAVIORAL HEALTH

799 South Main Street
Lima, OH 45804
419-229-2222
colemanservices.org

775 East Eliza Street
Kenton, OH 43326
419-675-2243

720 Armstrong Street
St. Marys, OH 45885
419-300-7630

16 East Auglaize Street
Wapakoneta, OH 45895

FAMILY RESOURCE CENTER

530 South Main Street
Lima, OH 45804
419-222-1168
Toll Free: 1-800-472-5279
frcoho.com

720 Armstrong Street
St. Marys, OH 45885
419-394-7451

775 East Eliza Street
Kenton, OH 43326
419-679-1219

SAFY

658 West Market Street, Suite 101
Lima, OH 45801
419-222-1527
Toll Free: 877-822-0556
safy.org

Re-Entry Coordinator

Re-entry work aimed at reintegrating those who are incarcerated back to the community, drug court coordination

COLEMAN BEHAVIORAL HEALTH

799 South Main Street
Lima, OH 45804
419-229-2222
colemanservices.org

Recovery Coaching

Peer based support designed to assist those with addiction to gain the resources and support needed for their recovery

COLEMAN BEHAVIORAL HEALTH

799 South Main Street
Lima, OH 45804
419-229-2222
colemanservices.org

775 East Eliza Street
Kenton, OH 43326
419-675-2243

720 Armstrong Street
St. Marys, OH 45885
419-300-7630

16 East Auglaize Street
Wapakoneta, OH 45895

UMADAOP

311 East Market Street, 3rd Floor
Lima, OH 45801
419-222-4474
limaumadaop.com

416 South Main Street
Kenton, Ohio 43326
419-679-1679

School Navigation

School based programming, referral to services, and consultation.

FAMILY RESOURCE CENTER

530 South Main Street
Lima, OH 45804
419-222-1168
Toll Free: 1-800-472-5279
frcoho.com

775 East Eliza Street
Kenton, OH 43326
419-675-2243

720 Armstrong Street
St. Marys, OH 45885
419-300-7630

SAFY

658 West Market Street, Suite 101
Lima, OH 45801
419-222-1527
Toll Free: 877-822-0556
safy.org

Support Groups

Support groups offered for those who need support surrounding specific topics/life events

PVFF

309 West High Street, Suite A
Lima, OH 45801
419-549-8530
pvff.org

SAFY

658 West Market Street, Suite 101
Lima, OH 45801
419-222-1527
Toll Free: 877-822-0556
safy.org

We Care At Work

Drug-free workplace program

MENTAL HEALTH & RECOVERY SERVICES BOARD OF ALLEN, AUGLAIZE, AND HARDIN COUNTIES

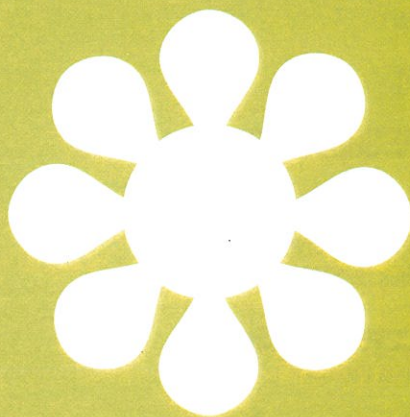
529 S. Elizabeth Street
Lima, OH 45804
419-222-5120
wecarepeople.org

INDEX

Access Units (walk-in screening) 3, 12 Coleman Behavioral Health	Assisted Living 4 Coleman Behavioral Health	Driver's Intervention Program 6, 14 Lima UMADAOP
ACT Raising Safe Kids 7 PVFF	Batterers Intervention 4, 6 Coleman Behavioral Health Lima UMADAOP	Education Programming 6, 14 Lima UMADAOP
Adult Care Facilities 4 Coleman Behavioral Health	Borderline 4 Coleman Behavioral Health	Employment Navigation 3 Coleman Behavioral Health
Aftercare 3 Coleman Behavioral Health	Cardon Outreach 10, 13 Coleman Behavioral Health Special Services & Programs	Engaging Communities Coalitions 7 PVFF
Aggression Replacement Training 5 Family Resource Center	Care Navigation 3, 13 Coleman Behavioral Health	FACT 3, 14 (Fathers Accountable for Children's Tomorrows) Coleman Behavioral Health
Aiming High 6 Lima UMADAOP	Changing Seasons 3, 13 Coleman Behavioral Health	FIRST Episode Psychosis 4 Coleman Behavioral Health
Anger Management 4, 6 Coleman Behavioral Health Lima UMADAOP	Circle for Re-entry Ohio (CFRO) 6, 13 Lima UMADAOP	Family Resource Center 5
Alcohol and Other Drug Assessment 3, 5, 9 Coleman Behavioral Health Family Resource Center SAFY	Coalition Building 7, 13 PVFF	GEMS 6 Lima UMADAOP
Alcohol and Other Drug Awareness 3 Coleman Behavioral Health	Coleman Behavioral Health 3	GRASSP 8 PVFF
Alcohol and Other Drug Case Management 3, 5, 6, 9, 12 Coleman Behavioral Health Family Resource Center Lima UMADAOP SAFY	Cognitive Enhancement Therapy 3, 13 Coleman Behavioral Health	Hopeline 3, 14 Coleman Behavioral Health
Alcohol and Other Drug Counseling 3, 5, 6, 9, 12 Coleman Behavioral Health Family Resource Center Lima UMADAOP SAFY	Community Psychiatric Supportive Treatment (CPST) 3, 5, 9, 13 Coleman Behavioral Health Family Resource Center SAFY	Housing 4, 14 Coleman Behavioral Health
Alcohol and Other Drug Groups 3, 5, 6, 12 Coleman Behavioral Health Family Resource Center Lima UMADAOP	Connections 4 Coleman Behavioral Health	Housing Assistance Program (HAP) 4 Coleman Behavioral Health
Alcohol and Other Drug Intensive Outpatient 3, 5, 6, 12 Coleman Behavioral Health Family Resource Center Lima UMADAOP	Criminal Justice 3 Coleman Behavioral Health	Juvenile Court Navigation 5, 14 Family Resource Center
	Crisis Intervention 5 Family Resource Center	Keeping What Matters 8 PVFF
	Crisis Intervention/Prescreening 3 Coleman Behavioral Health	Lifelines 7 PVFF
	Crisis Stabilization Unit 3, 14 Coleman Behavioral Health	Lima UMADAOP 6
	Crisis Text Line 3, 14 Coleman Behavioral Health	Loss Team 7 PVFF
	Critical Incident Stress Management (CISM) 10, 14 Special Services & Programs	Male Academy (MATCH) 6 Lima UMADAOP
		Medical Detoxification 10, 14 Special Services & Programs
		Medication Assisted Treatment 4, 6, 14, 15 Coleman Behavioral Health Lima UMADAOP

INDEX

- Men's Recovery House** 6
| Lima UMADAOP
- Mental Health Assessment** 4, 5, 9
| Coleman Behavioral Health
| Family Resource Center
| SAFY
- Mental Health Counseling** 4, 5, 9, 15
| Coleman Behavioral Health
| Family Resource Center
| SAFY
- Mental Health First Aid** 7
| PVFF
- Mental Health Groups** 4, 5, 9, 15
| Coleman Behavioral Health
| Family Resource Center
| SAFY
- Mindfulness** 4
| Coleman Behavioral Health
- Moral Reconciliation Therapy** 3, 5
| Coleman Behavioral Health
| Family Resource Center
- Mozaic** 8
| PVFF
- OLWEUS** 7
| PVFF
- Open Gate** 4, 15
| Coleman Behavioral Health
- PAX at Home** 7
| PVFF
- Peacemaker Project** 6
| Lima UMADAOP
- Permanent Supportive Housing** 4
| Coleman Behavioral Health
- PFLAG** 8
| PVFF
- Phoenix House** 6
| Lima UMADAOP
- Post Hospital Discharge** 4
| Coleman Behavioral Health
- Postvention Outreach** 7
| PVFF
- Prevention Outreach** 7, 15
| PVFF
- Prevention Programming** 5, 6, 7, 9, 15
| Family Resource Center
| Lima UMADAOP
| PVFF
| SAFY
- Primary Care** 4, 16
| Coleman Behavioral Health
- Problematic Sexual Behavior Treatment** 5
| Family Resource Center
- Psychiatry** 4, 5, 9, 16
| Coleman Behavioral Health
| Family Resource Center
| SAFY
- PVFF** 7
- PVFF Support Groups** 8
- Recovery Coaching** 4, 6, 16
| Coleman Behavioral Health
| Lima UMADAOP
- Recovery Housing** 6
| Lima UMADAOP
- Re-Entry Coordinator** 4, 16
| Coleman Behavioral Health
- Relapse Prevention** 3
| Coleman Behavioral Health
- Remove, Refuse, Reasons** 7
| PVFF
- Rental Units** 4
| Coleman Behavioral Health
- Safe Dates** 7
| PVFF
- Safe Spaces** 8
| PVFF
- SAFY** 9
- SBIRT** 3
| Coleman Behavioral Health
- Scattered Site Housing** 6
| Lima UMADAOP
- School Navigation** 5, 9, 16
| Family Resource Center
| SAFY
- Self Esteem** 4
| Coleman Behavioral Health
- Sexual Offenders** 4
| Coleman Behavioral Health
- Shelter from the Storm** 8
| PVFF
- Shelter Plus Care** 4
| Coleman Behavioral Health
- Stacked Deck** 7
| PVFF
- Stages Of Change** 3
| Coleman Behavioral Health
- Start Talking** 6
| Lima UMADAOP
- Steps** 3
| Coleman Behavioral Health
- Suicide Coalitions** 7
| PVFF
- Summer Enrichment (STEM)** 6
| Lima UMADAOP
- Support Groups** 7, 9, 17
| PVFF
| SAFY
- Thinking For A Change** 3
| Coleman Behavioral Health
- Trauma Recovery & Empowerment Model** 4
| Coleman Behavioral Health
- Understanding Loss** 8
| PVFF
- We Care at Work** 10, 17
| Special Services & Programs
- WIIT (We're In It Together)** 3
| Coleman Behavioral Health
- Women & Children Recovery House** 6
| Lima UMADAOP
- Women's Support** 4
| Coleman Behavioral Health
- Youth Led Prevention Coalitions** 7
| PVFF



mhrsb

wecarepeople.org

Design by: Modo Media